

Cache Creek Landfill

The Cache Creek Landfill plays an essential role in the Greater Vancouver Regional District's (GVRD) integrated waste management system. Developed for the GVRD by the Village of Cache Creek and Wastech Services and opened in 1989, it provides economic benefits to the local community and an environmentally safe location to dispose of municipal solid waste.

The Cache Creek Landfill is fully designed and operated as an environmentally secure landfill, with a detailed operating plan, a stringent environmental inspection system and a final closure plan. The landfill is projected to close in 2007, and a replacement landfill is proposed for a portion of the Ashcroft Ranch. For more information on the proposed replacement landfill, please see the GVRD fact sheet entitled Ashcroft Ranch Landfill Project.



Community benefits

The landfill brings substantial economic benefits to the communities of Cache Creek and Ashcroft, including:

- job creation (100 people employed by the local landfill and trucking operations) and a \$4-million annual payroll
- local opportunities to supply materials and services to the trucking and landfill operations
- municipal revenues to the Village of Cache Creek.

Funds have also been set aside for the long-term care of the landfill after it is closed. The Ministry of Water, Land and Air Protection holds these funds in trust.

Why Cache Creek?

The Cache Creek area is suitable for a long-term solid waste disposal site because of its dry climate, seismically stable geology and good access to highways. The area's low precipitation rate reduces the amount of rain that could seep into the landfill. This results in a more environmentally secure landfill and reduces operating costs.

Landfill costs are also reduced by ensuring that trucks hauling waste up to Cache Creek do not return empty. Trucks return to the Lower Mainland with full loads of wood chips that are then sold to paper mills.

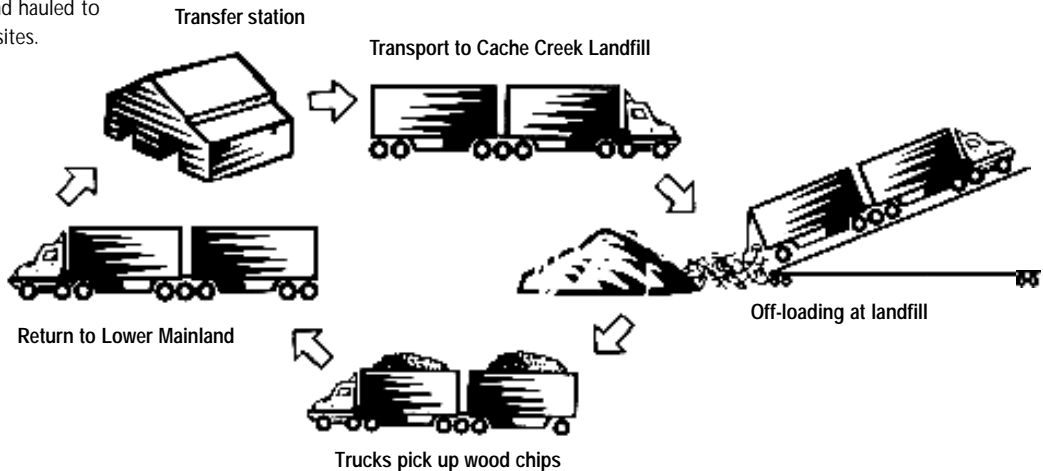
How the Cache Creek Landfill works

At transfer stations in the GVRD, local solid waste is dropped off, screened for hazardous waste and recyclable materials, loaded into trucks and hauled to disposal sites.

Solid waste received at Lower Mainland transfer stations is compacted and loaded onto fully enclosed container trucks for the drive to Cache Creek along the Fraser Canyon route. The waste is off-loaded at the landfill, compacted

further and covered with soil regularly to reduce odours and control litter.

After the truck containers are cleaned, they are loaded with wood chips for the return trip to the Lower Mainland.



Cache Creek Landfill fast facts

- in operation for more than 12 years
- located approximately 330 kilometres northeast of Greater Vancouver in the Village of Cache Creek
- total site area is 48 hectares (120 acres)
- receives approximately 16% of the solid waste generated in the GVRD
- consists of municipally collected residential and commercial solid waste, and does not include hazardous wastes or recyclable materials
- receives up to 500,000 tonnes of municipal solid waste per year
- majority of waste received from Lower Mainland municipalities and smaller quantities received from Cache Creek, Ashcroft, the surrounding Thompson-Nicola Regional District, and from the Powell River, Cowichan Valley, Fraser Valley and Nanaimo Regional Districts
- projected to close in 2007

Environmental protection

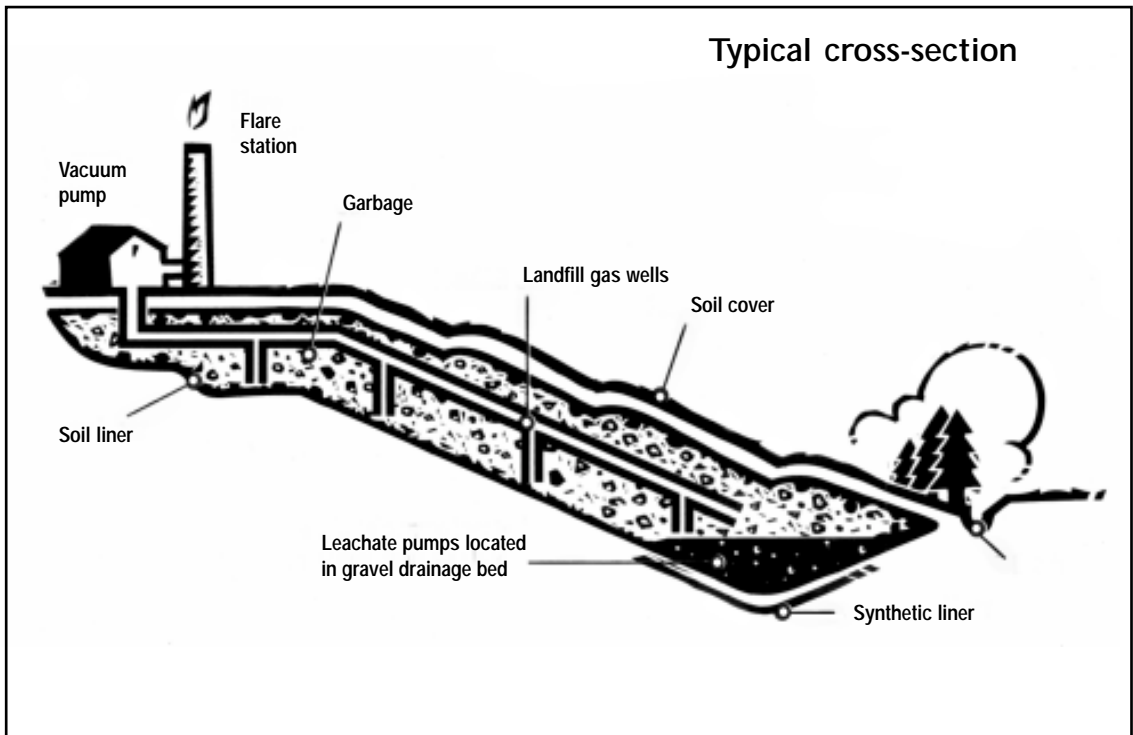
The primary characteristic that makes the Cache Creek Landfill environmentally secure is a design that takes advantage of the geology and climate in which the landfill is located. The geology is seismically stable and the semi-arid climate evaporates more water than is received from the area's precipitation.

The landfill is divided into areas called 'stages' with synthetic and soil liners to contain potential leachate (contaminated water). Ditches divert the surface rainwater around the site. If any water does seep in to the waste to form leachate, pumps located at the base of the landfill are there to collect it.

A network of wells and a vacuum pump collect landfill gas (mainly comprised of carbon dioxide and methane), which is then burnt off at the flare station, thereby significantly reducing greenhouse gas emissions.

When a portion of the landfill is full, that area is covered with a metre of soil; a layer of topsoil is also added to support and encourage vegetation growth.

Groundwater, surface water and landfill gas monitoring programs are in place at the landfill.



Monitoring the facility

A stringent operational and environmental inspection system is in place at the Cache Creek Landfill.

Monitoring functions include:

- landfill operator - daily inspections
- Village of Cache Creek - weekly inspections
- Citizens' Landfill Advisory Committee - weekly inspections
- Ministry of Water, Land and Air Protection - quarterly inspections
- Greater Vancouver Regional District - at least four times a year
- Provincial Regional Health Department - periodic inspections, as required
- independent consulting engineer - twice yearly inspections.

Ongoing local input

The Citizens' Landfill Advisory Committee reviews the operation and maintenance of the landfill and the compliance of Wastech Services and the Village of Cache Creek with the Operational Certificate for the landfill.

The committee members conduct weekly inspections and meet monthly to discuss the results. The committee ensures that Wastech Services, the GVRD and the Village of Cache Creek consider citizens' concerns about landfill operations and their impact on the community.

For more information, please

write:

Greater Vancouver Regional District

Contracted Services

Engineering and Construction Department

7th Floor - 4330 Kingsway,
Burnaby, B.C. V5H 4G8

call: 604-451-6185

fax: 604-451-6180

e-mail: comm_ed@gvrd.bc.ca

GVRD Web site:

www.gvrd.bc.ca

The GVRD, one of 27 regional districts in B.C., is a partnership of 21 municipalities and one electoral area that make up the metropolitan area of Greater Vancouver. Regional districts provide region-wide essential services including solid waste management.

